



**Pashley Court, Alexandra Road**

**£1,100 PCM**

  
**MARTIN&CO**



Pashley Court, Alexandra Road

House - End Terrace

1 Bedrooms, 1 Bathroom

£1,100 PCM

Date Available: 16th April 2025

Deposit: £1,269

Unfurnished

- Deposit £1269
- Council Tax Band B
- EPC E 48
- Mezzanine Bedroom
- Juliette Balcony
- Double Glazing
- Downstairs WC
- End terrace
- Short Walk to North Camp Train Station
- Off Road Parking

Martin & Co are pleased to present to the market this one bedroom, end terrace home. This modern property offers bright and airy open plan accommodation, perfect for modern day living.

The property benefits from a downstairs WC, fully fitted kitchen, large lounge and a utility cupboard. Upstairs there is en suite shower room and mezzanine bedroom with a beamed ceiling and a "Juliette" balcony overlooking the front aspect.

Available immediately on an unfurnished basis. Minimum household income for references required - £33,000  
Holding deposit (one weeks rent) - £253

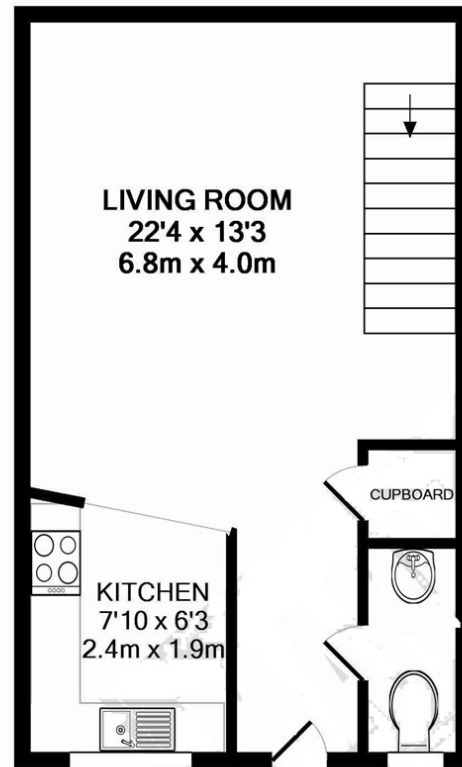




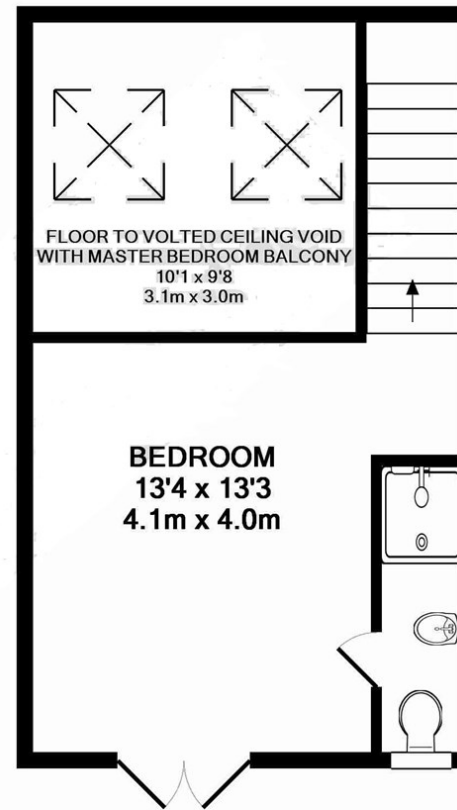


Energy Efficiency Rating		
	Current	Potential
Very energy efficient - lower running costs		
(92 plus) <b>A</b>		
(81-91) <b>B</b>		
(69-80) <b>C</b>		
(55-68) <b>D</b>		
(39-54) <b>E</b>	48	54
(21-38) <b>F</b>		
(1-20) <b>G</b>		
Not energy efficient - higher running costs		
England & Wales	EU Directive 2002/91/EC	

Environmental Impact (CO <sub>2</sub> ) Rating		
	Current	Potential
Very environmentally friendly - lower CO <sub>2</sub> emissions		
(92 plus) <b>A</b>	90	72
(81-91) <b>B</b>		
(69-80) <b>C</b>		
(55-68) <b>D</b>		
(39-54) <b>E</b>		
(21-38) <b>F</b>		
(1-20) <b>G</b>		
Not environmentally friendly - higher CO <sub>2</sub> emissions		
England & Wales	EU Directive 2002/91/EC	



GROUND FLOOR



1ST FLOOR

Made with Metropix ©2009

Martin & Co Aldershot Lettings  
173 Victoria Road, Aldershot, Hampshire, GU11 1JU  
01252 311974 . aldershot@martinco.com

**01252 311974**  
**<http://www.martinco.com>**

**MARTIN&CO**

**Accuracy:** References to the Tenure of a Property are based on information supplied by the Seller. The Agent has not had sight of the title documents. A Buyer is advised to obtain verification from their Solicitor. Items shown in photographs including but not limited to carpets, fixtures and fittings are not included unless specifically mentioned within the sales particulars. They may however be available by separate negotiation. Buyers must check the availability of any property and make an appointment to view before embarking on any journey to see a property. No person in the employment of the agent has any authority to make any representation about the property, and accordingly any information given is entirely without responsibility on the part of the agents, sellers(s) or lessors(s). Any property particulars are not an offer or contract, nor form part of one. **Sonic / laser Tape:** Measurements taken using a sonic / laser tape measure may be subject to a small margin of error. **All**

**Measurements:** All Measurements are Approximate. **Services Not tested:** The Agent has not tested any apparatus, equipment, Fixtures and Fittings or services and so cannot verify that they are in working order or fit for the purpose. A Buyer is advised to obtain verification from their Solicitor or Surveyor.